



5th International Conference MINERALOGY AND MUSEUMS Paris France 2004

September 5th-8th 2004



Second Circular

Web site : [http:// www.ensmp.fr/MM5](http://www.ensmp.fr/MM5)

5th International Conference  Mineralogy and Museums
Paris France 2004

Sponsors

Société Française de Minéralogie et Cristallographie
École Nationale Supérieure des Mines de Paris
Museum National d'Histoire Naturelle
Université Pierre et Marie Curie
International Mineralogical Association

Organising Committee

General Chairman
Lydie TOURET
École des Mines de Paris

Secretary
Sylvie MAFFINI
École des Mines de Paris

Registration
Europa Organisation

Treasurer
Michel GUIRAUD
Société Française
de Minéralogie et Cristallographie

Scientific Program
Jean Claude BOULLIARD
Université Pierre et Marie Curie

Amédée DJEMAI
École des Mines de Paris
Michel GUIRAUD
Museum National d'Histoire Naturelle

Field Excursions
Gian Carlo PARODI
Museum National d'Histoire Naturelle

Program Coordinator
Jean Michel LE CLÉACH
École des Mines de Paris

General Committee
Dominique DEVILLE
École des Mines de Paris

Scientific Program Committee

Chairman
Michel GUIRAUD
Minéralogie USM 201
Département d'Histoire de la Terre
Museum National d'Histoire Naturelle
61, rue Buffon 75005 FRANCE
Tel. 33 1 40 79 48 41
Fax. 33 1 40 79 35 24
Email : mguiraud@mnhn.fr

Members
Jean Claude BOULLIARD
Université Pierre et Marie Curie
Email : boulliar@lmcpc.jussieu.fr

Amédée DJEMAI
Ecole des Mines de Paris
Email : amedee.djemai@ensmp.fr

Gian Carlo PARODI
Museum National d'Histoire Naturelle
Email : gcparodi@cimrs1.mnhn.fr

Address for all Correspondence

M&M5 2004
Dr. Lydie TOURET
Musée de Minéralogie,
École des Mines de Paris
60, Boulevard Saint Michel 75006 Paris FRANCE

Tel : 33 1 40 51 91 43 Fax : 33 1 46 34 25 96
Email : lydie.touret@ensmp.fr

**5th International Conference Mineralogy and Museums
Paris France 2004**

**From Sunday September 5th
to Wednesday September 8th
2004**

Contents

General Information, Paris	4
Registration	7
Scientific Program	8
Call for Papers and Abstract Submission.....	9
Field Trips	11
Social Program	14
Critical Dates	14
Locality Map	15

General Information, Paris

Meeting Venue



The conference sessions will be held at the Ecole Nationale Supérieure des Mines de Paris located in the heart of Paris. This institution started in 1783 as a museum and had as first curator R.J. Haüy who wrote there his "Traité de Minéralogie". Despite all political changes the Ecole des Mines has never stopped teaching high level Mining Engineers. Nowadays the fame of the Museum of Mineralogy relies on its systematic collections.

Meetings of IMA Commissions and Working Groups will be held at the same place, in the room devoted to R. J. Haüy.

Internet Sites

Information on the collections at Ecole des Mines de Paris can be found at:

<http://www.musee.ensmp.fr>

The M&M5 coming circulars website will be found through this address :

<http://www.ensmp.fr/MM5>

Information on the collections at the Museum National d'Histoire Naturelle can be found at :

<http://www.mnhn.fr>

Information on the collections at University Pierre et Marie Curie can be found at :

<http://www.lmcp.jussieu.fr>

Information on the Société Française de Minéralogie et Cristallographie can be found at :

<http://www.mnhn.fr/sfmc>

How to get to Paris

By air

Paris Airports :

* Roissy Charles De Gaulle is located about 32 km north of Paris. It serves both international and internal flights using a single terminal complex. A taxi fare to the city will cost in the order of 35 euros and takes about 30 minutes.

* Orly is located about 20 km south of Paris.

For transfers between Paris and its airports city shuttle bus as well as RER (subway) are available.

5th International Conference Mineralogy and Museums Paris France 2004

By train

Paris is well-served by interstate train and coach companies coming from major European capital cities. Railway stations are located in the centre of the city.

More details available on the web site :

<http://www.ensmp.fr/MM5>

Visas

Any person travelling to France who is not a European citizen will need a passport and valid "Schengen" visa. Participants should check with the French Embassy in their own countries, or visit the French immigration services website at :

<http://www3.itu.int/schengen/sch-tran.htm>

Weather

Mild autumnal weather, average temperature (20±°C). Possible rain.

Health and Insurance

The registration fees do not include insurance. It is strongly recommended that all registrants consult their travel agent and take out their own travel and medical insurance prior to coming to the conference. The Organising Committee will not accept any responsibility for any participant failing to insure.

Accommodation &Transport

Accommodation

A number of city hotels with different ratings have been made aware of the conference and may be prepared to offer slightly discounted rates. Student residences at a nearby university college are also available. Please check on the M&M5 website :

<http://www.ensmp.fr/MM5>

(on line beginning on December 2003)

Public transport

Paris has a very good public transport system. Daily and weekly tickets covering train, subway and bus can be purchased.

More information on prices and other facilities can be found at :

<http://www.ratp.fr>

<http://www.sncf.fr>

A photo is needed to get any transportation facility cards.

Hosting Ecole des Mines de Paris is located in the Quartier Latin within 100 meters of the subway RER and /or bus-stop: LUXEMBOURG- (see map on the last page) near the Jardin du Luxembourg and within walking distance of Pantheon and Cathedral Notre Dame de Paris. Taxis are also widely available.

Currency



Currency and exchange

Currency is euro.

Currency exchange facilities are situated at the airports, and exchange offices at all major banks.

Complementary Informations

Note : intending participants are advised to surf on the Internet for more information on Paris and France.

Electrical appliances

In France, electrical appliances operate on an AC 220 Volt supply, 50 Hz.

Shopping

In Paris, many shopping areas are available : department stores and specialist shops. Also, there are many shopping possibilities in the very heart of Paris (Champs-Elysees avenue, Place Vendome, Montaigne avenue, St Germain and Latin quarters), where the most famous names of fashion and jewellery and the greatest stores are to be found.

They are open from 10 am up to 8 pm and closed on Sunday.

There are many duty free shops and stores in Paris and in the airports.

Taxes

T.V.A is a variable purchase tax on goods and services. Remboursable to non residents persons when leaving France.

Further information on different web or mail-sites of the french customs services :

<http://www.finances.gouv.fr/douane>

or

crd-ile-de-France@douane.finances.gouv.fr

Registration

*** Note : Applicants for the reduced student fee must submit with their registration form a letter from the Head of Department at their academic institution confirming their student status at the time of the conference.**

Intending participants should register for M&M5 by completing and returning the enclosed Registration Form or directly by internet via the M&M5 site. Note that the registration form can be downloaded from the M&M5 site. Receipt for registration will be sent only if the correct amount has been paid. If you require a personal invitation to attend M&M5, please contact the Organising Committee.

Fees

Payments should be made in euros to Europa Organisation / M&M5 by international cheque drawn on a French Bank or by credit card at the following address :

Europa Organisation
5, rue Saint Pantaléon B.P. N° 844
31015 Toulouse Cedex 6, France
Tél. : 33 5 34 45 26 45 – Fax : 33 5 34 45 26 46 / 23
europa@europa-organisation.com

Field Trip fees must also be included in the total payment.

	Up to 30/04/2004	After 30/04/2004
Full participant	250 euros	320 euros
SFMC members	200 euros	270 euros
Students*	180 euros	250 euros
Accompanying person	150 euros	220 euros

The Registration fee includes:

- The abstracts and program volume
- Participation in the scientific program
- Welcoming party
- Visit to the three mineralogical collections of Paris at (Ecole des Mines, Museum National and Université Pierre et Marie Curie)
- Closing function
- Access to exhibits and poster sessions

Cancellations

Refund of 60% of the registration fee and field trip fees will be available only until 01/07/2003. After that date no refund will be made.

If a field trip has to be cancelled by the organisers for any reason, a full refund will be made.

Third Circular

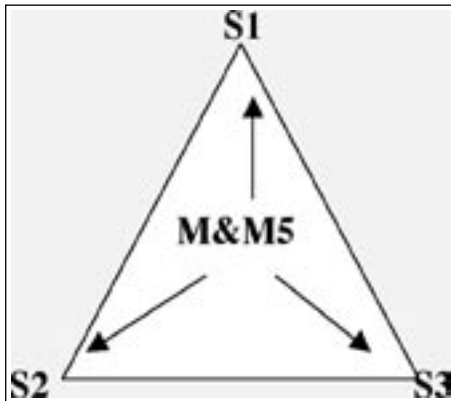
The final details for M&M5 will be given in the Third circular, which will be sent to all registrants in June 2004. However do check the M&M5 site regularly for informations and bargains regarding travel and accomodation.

Scientific Program

The scientific program includes oral and poster presentations. There will be no concurrent oral sessions.

Sessions

These are broadly aimed to cover research, collection management and society in museums.



- S1. Museums and Research
- S2. Museums and Collection Management
- S3. Museums and Society

Meetings of IMA Commissions and Working Groups

Time will be allowed in the program to enable meetings of the various IMA Commissions and Working Groups to be held. These will be scheduled concurrently on Wednesday September 8th and will be held in rooms at the Ecole des Mines de Paris. A dinner for all national representatives and office-bearers of Commissions and Working Groups will follow the closing event.

Software Fair

Space and computers will be made available for any participants wishing to demonstrate new mineralogical interactive software. Please indicate your interest by contacting the Organising Committee directly. Similarly, if any participant wishes to organise a pre-meeting workshop, please contact the Organising Committee directly.

Mineral Fair

Local mineral dealers and collectors have been approached to set up a fair where French mineral specimens will be available for purchase or exchange.

Tour of Paris Mineralogical Collections

For those interested, a half-day tour around museum's mineralogy and petrology collections at Paris, will be arranged. More details will appear in the Third Circular.

Call for Papers and Abstract Submission

Call for papers

All registrants are encouraged to submit an abstract on any topic relating to mineralogy, preferably in a museum context. These may cover original research, collection management and society. Papers or posters on new interactive and multimedia products are encouraged.

The selection of contributed papers to be presented orally will be decided by the Scientific Program Committee, taking into account the author's preference wherever possible. Oral and poster sessions will be regarded as of equal merit and will appear together in the abstract volume. The proportion of oral to poster presentations will be decided when all abstracts have been submitted.

Audio-visual Equipment

Oral presentations will be held in the new theatre in Ecole des Mines de Paris. Two screens, two 35-mm slide projectors, two video-projectors and two overhead projectors will be available. There is a likelihood of facilities for PowerPoint presentations, also being available, subject to confirmation.

Abstract Submission

Abstracts will only be accepted for publication from participants who pay their registration fees. Each registered participant may submit only one paper as communicating author. They may, however, be co-author of other papers. Abstracts will be printed in a volume that will be distributed to all registrants. No proceedings volume will be published. All Abstracts should be sent to, the following address:

M&M5 Scientific Program Committee

Michel GUIRAUD

Département d'Histoire de la Terre

Museum National d'Histoire Naturelle

61, rue Buffon Paris 75005 FRANCE

Email: mguiraud@mnhn.fr - boulliar@lmcp.jussieu.fr

amedee.djemai@ensmp.fr - gcparodi@cimrs1.mnhn.fr

Abstract submission format

Please submit 1 hard copy of the text, in addition to the file e-mail attachment, to be received no later than April 30th 2004. Use the subject "Abstract submission" when submitting the abstract file by e-mail.

Acknowledgment of Abstract submissions

All communicating authors will receive an acknowledgment when the abstract is received. All relevant information about the oral and poster presentation will be sent to the author as soon as the program is finalised. Use the subject "Abstract enquiry" when asking by e-mail about your abstract.

Guidelines for M&M5

Abstracts

Abstracts will be accepted in electronic form as a Microsoft Word, latex, ASCII file or pdf. The file may be sent as an attachment by e-mail. In addition, 1 (one) copy printed on white paper must be sent by Mail (not by fax) in the format shown below not exceeding 500 Kbytes. The Abstract should not exceed one page A4 and illustrations should be only in black and white.

Abstracts should be in English or French and presented in the following format :

About Museum's Mineralogy and Petrology Collections at Ecole des Mines de Paris, France

TOURET, L. (*Musée de Minéralogie, Ecole des Mines de Paris*) and DJEMAI, A. (*Musée de Minéralogie, Ecole des Mines de Paris*) (amedee.djemai@ensmp.fr).

Title should be typed in times 14 bold. Leave one line between the abstract title block and the authors' block, and between the authors' block and the start of the text. Underline the name of the communicating author. Do not include full addresses in the authors' affiliations. The e-mail address of the communicating author is not essential.

Text should be typed in times 10 with 1 spacing, and paragraphs indicated by a additional space between them.

The address for abstract submission by e-mail attachment is: **mguiraud@mnhn.fr**. Use the subject "**Abstract submission**" when submitting the abstract file by e-mail. Use the subject "**Abstract enquiry**" when asking by e-mail about your abstract.

References may be included in the abstract. References are to be listed in alphabetical order at the foot of the abstract and journal abbreviations should follow the style as used in Mineralogical Abstracts.

On the hard copy, indicate beneath the Abstract the relevant session title, the preferred form of presentation (oral / poster), the mailing address, and the contact details of the communicating author, as shown below.

Session Preferred.....

Preferred form of presentation
(oral or poster)

Mailing address of
communicating author.....

Telephone

Fax.....

E-mail.....

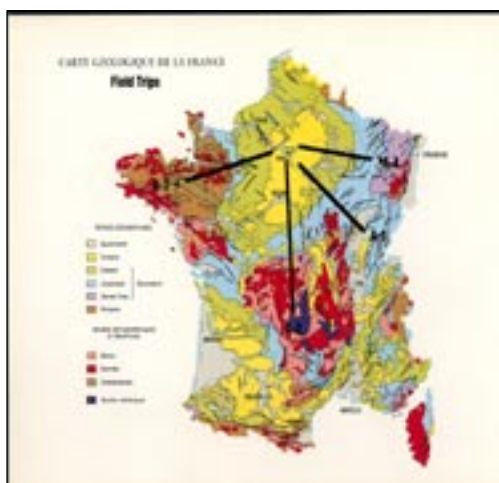
Field Trips

The following field trips are being offered as part of the M&M5 program. We have endeavoured to ensure a good mix of mineral collecting, geological highlights, scenery and culture, so your choice may be a difficult one.

Availability

As some of the trips may be over-subscribed, intending participants should apply as soon as possible. Places on each field trip will be on the basis of first-come first-serve. Field trips that do not attract sufficient registrants will be cancelled. In this event, registrants will be provided with a refund. It is not essential that you register for M&M5 in order to participate to a field trip. Those who do register, however, will receive priority if a field trip is oversubscribed.

Costs



All costs are based on double occupancy of hotel or motel rooms; any special accommodation requirements may result in a surcharge. Unless stated otherwise, costs include transportation during the field trip, breakfasts, box or other lunches and evening meals. Participants are responsible for the costs of travel to and from the assembly point.

Connections

Information on the most suitable connections between the arrival / departure site of each field trip and your accommodation in Paris will be provided by the field trip leaders.

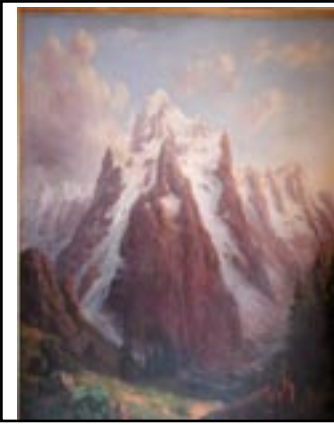
Registration

Field trip registration forms should be returned, by April 30, 2004. Final payment will be required by April 30, 2004. Details regarding time, place and date of assembly, as well as other information for each field trip, will be sent to registered participants in June/July 2004.

Post-conference Field Trips

A-1 : Mineralogical excursion in the Alps From Grenoble to Chamonix, the highlights of alpine mineralogy

Duration : 5 days
Participants : Minimum of 25
Cost : euros 800
Departure : Paris, Thursday September 9th
End of Excursion : Paris, Monday September 13th



1st day: Departure from Paris in the morning, arrival (by train?) to Grenoble. Visit of the Musée d'Histoire Naturelle de Grenoble, which houses an important collection of French alps classics : « La Gardette » quartz twins, anatase, prehnite, axinite, monazite, sidérite. Visit of the home town of Dolomieu (and, for fans of French literature, Stendhal). Transfer (bus) to Bourg d'Oisans

2nd day: La Plan du lac, type locality for anatase and crichtonite. La Combe de la Selle, type locality for prehnite. Town Museum (Musée Municipal) in Bourg d'Oisans.

3rd Day: The Lauziere massif : valley of Maurienne and Tarentaise. Ti, Be- and REE-bearing alpine clefts of the Aiguille de Balme (bertrandite, phenakite, beryl, crichtonite, titanite). The Col de la Madeleine (anatase). Museum of the « grand Filon » mine in Saint-georges d'Hurtère, Musée du Cristallier (strahler) at Bourg Saint Maurice. Arrival to Moutiers.

4rd day : The remnants of the ancient School of Mines (successively Paris and Torino) at pesey-Nancroix, transfer to Chamonix. « Soirée montagnarde » with Chamonix mountain guides.

5th day: Whole traverse of the mont-Blanc massif (cable-car, excursion), until Courmayeur on the Italian side.

6th day: Free morning, visit of private collections. Return to Paris

Obs : No specific physical difficulties (only short walks in not difficult terrains), but good shoes (cranted sole) are strongly recommended



A-2 : Volcanos and Mineralogy

Leader : Bertrand Devouard (Univ. BP de Clermont-Ferrand)

Duration : 5 days

Participants : Minimum of 25

Cost : euros 700

Departure : Paris, Thursday September 9th

End of Excursion : Paris, Monday September 13th

1st day : Arrival at Clermont-Ferrand around noon. Presentation of the local context of Museums of Mineralogy and Earth Sciences. Visit of the town's Museum of Natural Sciences (Musée Lecoq), which retains part of the collections of the French chemist Lavoisier. Visit of the Collection of Mineralogy at Blaise Pascal University.

2nd day: A.M.: Visit of historical downtown Clermont-Ferrand. Optional: possibility of flight over the volcanos in balloon (at an additional cost, and depending on weather: <http://www.objectif-montgolfiere.com/menu/survol/survol.htm>). P.M.: Overview of volcanism in the French Massif Central. Visit of Vulcania, European Park of Volcanism and Geosciences (<http://www.vulcania.com>).

3rd Day : Volcanos and mineralogy. Sight-seeing, in the Chaîne des Puys, Monts-Dore, Sancy and Velay (or Cantal) and mineral collecting (4 or 5 occurrences among the following: fumarolic hematite, peridotite xenoliths, microminerals in mafic/silicic enclaves, alluvional sapphires, volcanic hauyne and scapolites, sanidine, augite and amphibole crystals, gonnardite... depending on the best opportunities at the time of the field trip).

4rd day: Historical mining activities (beginning at the roman epoch). Visit of an ancient mine gallerie and local museum. Depending on opportunities at the time of the field trip, possibility of collecting semseyite, chapmanite...

5th day: Visit of a lapidary shop or further sight-seeing in Clermont-Ferrand. Optional: possibility of flights over the volcanos in balloon. Departure for Paris.

A-3 : Mineralogical discovering of Brittany



Leader : Jean Michel Le Cléach (Ecole des Mines de Paris)
Duration : 5 days
Participants : Minimum of 25
Cost : euros 700
Departure : Paris, Thursday September 9th
End of Excursion : Paris, Monday September 13th

The program of the visits will include several famous mineralogical sites related to metamorphism like étang des Salles (chiastolite), Coray (staurolite), île de Groix (glaucophane), few ancient mines sites: Huelgoat (silver galena), La Villeder (cassiterite) and few industrial minerals operations : Glomel (andalousite work), Berrien (kaolinite work).

A-4 : Historical Mines and Geology of the Vosges Mountains (Eastern France)



Leader : Pierre Flück (Professor, University of Haute Alsace), ASEPAM, Maison de la Géologie de Haute Alsace
Duration : 5 days
Participants : Minimum of 25
Cost : euros 700
Departure : Paris, Thursday September 9th
End of Excursion : Paris, Monday September 13th

The excursion is focussed on the famous silver district of Sainte-Marie- aux Mines, a small medieval mining town, about 50 km west of Strasbourg. The outstanding mineralogical collection of the “Maison du Pays” will be visited, as well as the Saint Louis and Gabe-Gottes middle age mines, the manganese deposit of the Haut Poirot (close to Gerardmer), the historical limestone quarry already described by Guettard and Lavoisier in the XVIIIth century and the site (and sample) of the Ensisheim meteorite. The Vosges Mountains are a famous touristical country, with ample opportunities to visit Alsace vineyards, typical landscapes and villages, and historical sites such as the Haut Koenigsburg Castle.

Social Program

**Monday,
September 6**

Welcoming Party at Hotel de Ville de Paris

Speech by the mayor of Paris

« Bateau-mouche » river cruise in Paris

The Seine is crossed by many old and beautiful bridges and most famous Paris monuments are on the river banks. This typically Parisian riverboat will present you unique views on the city and is one of the most enjoyable way to visit Paris.
(not included in fees) Cost : euros 10 per person.

**Tuesday,
September 7**

Conference Dinner at UNESCO Restaurant

(not included in fees) Cost : euros 50 per person.

**Wednesday,
September 8**

Closing function, Ecole des Mines de Paris

Drinks and refreshments to mark the end of conference.

*Buffet for all national representatives and office-bearers of commissions and working groups

Note : *Visit of Monuments, Museums, hidden and mysterious unknown Paris and sightseeing Tours are in preparation. Tours to the Palace of Versailles or to the Renaissance Chateaux of the Loire Valley are also possible. There will be an information and booking desk at registration for these events. The prices for these are not included in the registration fee. Payment will be done in Paris.*

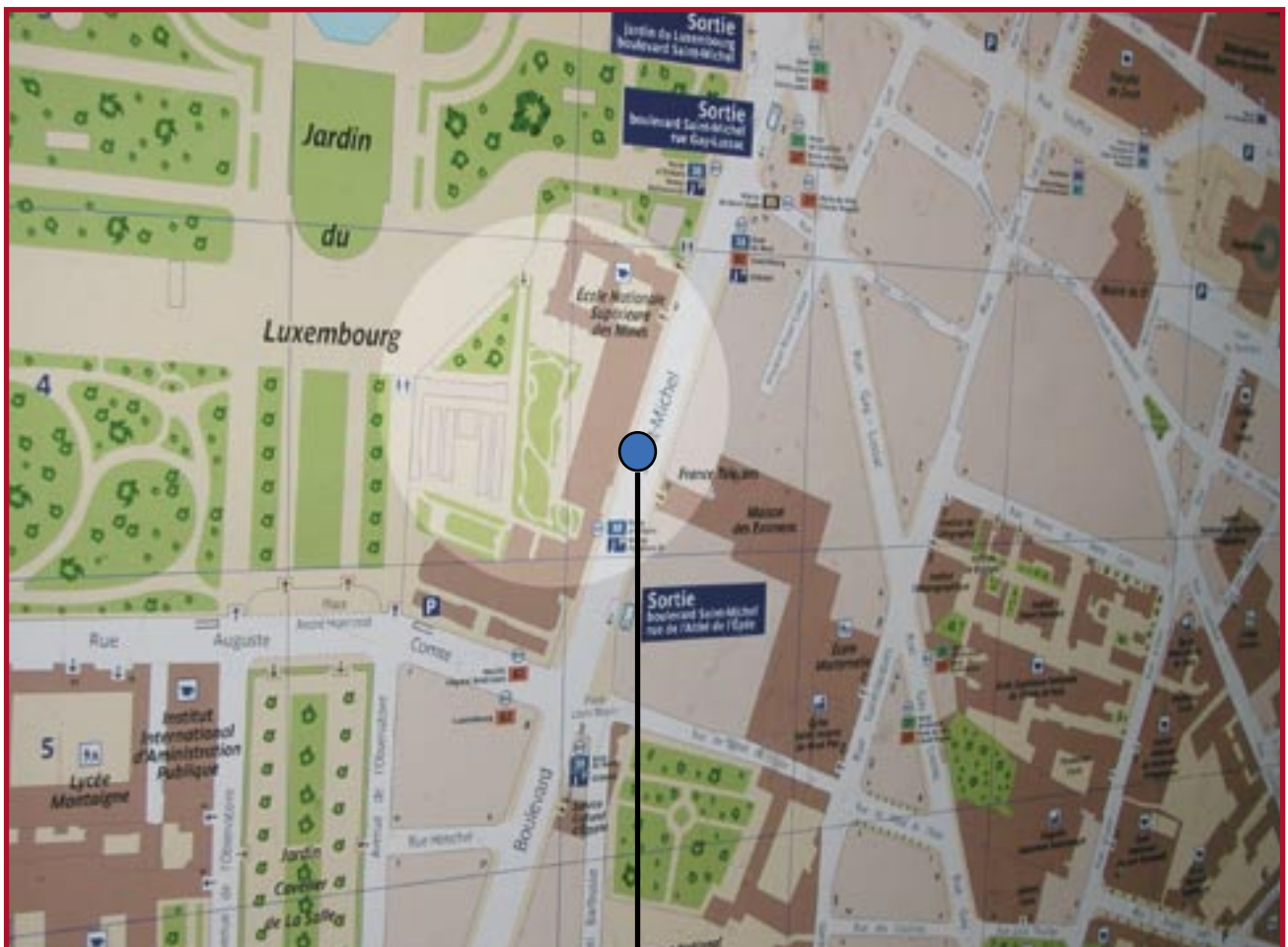
Critical Dates

30 April 2004	Last date for abstract submission
	Last date for registration fees
30 June 2004	3 rd Circular for M&M5 to be circulated
	End of refund availability
05 September 2004	Registration M&M5 begins
06 September 2004	Welcoming Party at Hotel de ville de Paris
07 September 2004	Meetings of the IMA Commissions and Working Groups
	Conference Dinner at the UNESCO restaurant
08 September 2004	M&M5 ends
	Closing function and representative dinner
09-13 September 2004	Post-conference Field Trips :
	Alpes : Mineralogical excursion
	Auvergne : Volcanos and Mineralogy
	Bretagne : Mineralogical discovering
	Vosges : Historical Mines and Geology

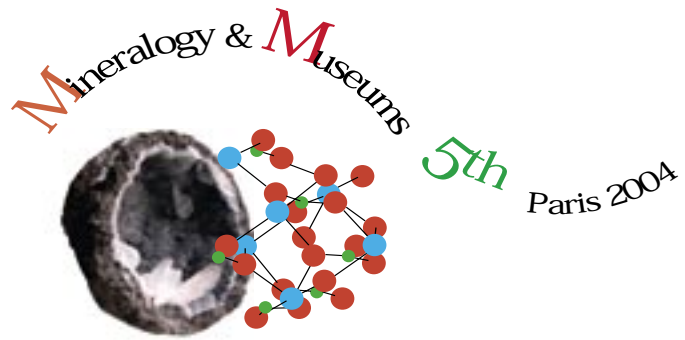
Mineralogy & Museums 5th Paris 2004



Locality Map

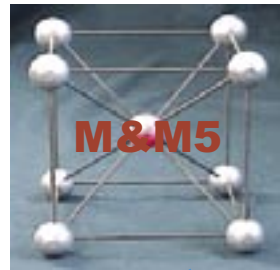


École des Mines de Paris



Paris, September 5-8, 2004

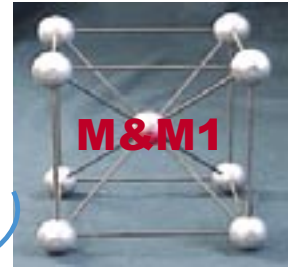
Research



Society



Melbourne,
December, 4-7,
2000

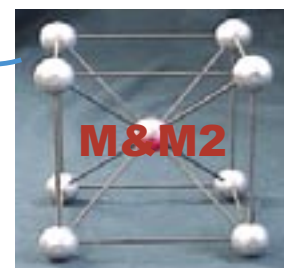


London,
July 5-6,
1988



Budapest,
June 9-13,
1996

Collection
Management



Toronto,
September 10-11,
1992

